

# FOREO



## IRIS™

ILLUMINATING EYE  
MASSAGER

## FULL USER MANUAL



### GETTING STARTED

Congratulations on taking the first step towards younger-looking, refreshed eyes by acquiring this FOREO device. Before you begin to enjoy all the benefits of our sophisticated skincare technology, please take a few moments to look through this manual.

**NOTE:** Use this device only for its intended use as described in this manual.

### USING YOUR IRIS™

The full routine takes 1 minute (30 seconds for each eye) and should be completed twice per day.

#### FEATURES

- Alternating T-Sonic™ Technology: a unique tapping movement inspired by fingertip tapping eye massage.
- Available in 2 modes that are customizable to your needs:
  - Spa Mode: combines tapping movement with delicate pulsations to recreate a professional beauty treatment. Suitable for use on skin that is showing more pronounced signs of aging.
  - Pure Mode: inspired by manual eye massage, this mode channels the tapping movement alone to be very gentle on the eye contour. Perfect for use on skin that is beginning to show traces of aging.
- 8 intensities for maximum comfort: the intensity of each mode can be increased or decreased with the "+" or "-" buttons. Furthermore, the device will remember your preferences for the next time it is used.
- Textured Silicone: for an optimal grip (IRIS™ Black only).
- Fully waterproof: with sealed charging port so it's easy to clean and can even be used in the bath or shower, according to your preference.
- Integrated timer: pulsations will pause after 30 seconds to indicate when you should move the device to the other eye. The device will pause its pulsations 3 times in succession and the indicator light will emit a steady glow after 1 minute to signify the end of the entire routine.
- Your FOREO device will switch itself off after 3 minutes in either mode to prevent overuse.

#### MODE SELECT

1. Press the center button once to turn on your IRIS™. When activated, it will be in Spa Mode.
2. Press the center button again to put the device in Pure Mode.
3. Press the center button once more to deactivate your IRIS™.

You can adjust the intensities of the IRIS™'s Pure and Spa Modes by using the "+" or "-" buttons.

**NOTE:** The IRIS™ eye massager may be locked when first unboxed – unlock it by holding down the "+" and "-" buttons together for 3 seconds. The light will flash to indicate that your device is unlocked.

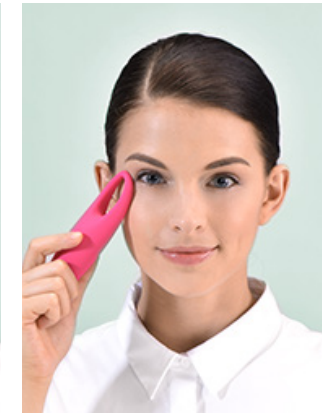
### HOW TO USE IRIS™

Just 1 minute each morning and evening for refreshed and younger-looking eyes



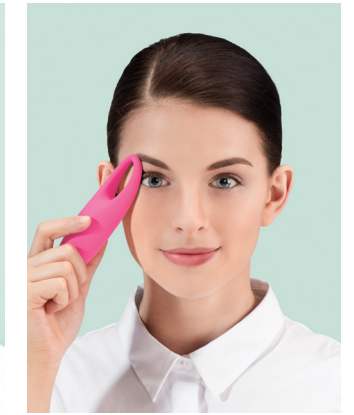
#### APPLY CREAM

Apply and spread your regular eye cream or eye serum.



#### MASSAGE

Apply the device on the eye contour from the center to the exterior, and under and above the eye. 30 seconds on one eye and 30 seconds on the other eye.



#### RELAX

After 1 minute the routine is complete.

**CAUTION:** The IRIS™ should only be applied to the under-eye area and the brow bone and never to the eyelid or eyeball.

#### CHARGING

- Insert the charger into a USB charging port. The IRIS™'s LED will flash repeatedly to indicate the battery is charging. When it is fully charged (after approximately 1 hour), the LED will emit a steady glow.
- When the battery is running low, the LED on your IRIS™ will emit a blinking white light.

**NOTE:** Never use the device, charger or charging cable if they are damaged. When charging, make sure the charger is dry, and do not charge the IRIS™ in any location where it or the charger may become immersed in water. Only use the charger supplied by FOREO with your IRIS™. Always charge the IRIS™ before its first use, do not use the device while charging and do not charge for more than 24 hours.

#### CLEANING, STORAGE AND SAFETY

The life span of your IRIS™ will be greatly increased with proper maintenance and care.

Always clean the IRIS™ thoroughly after use. Clean your device by washing the surface with water and soap, then rinsing with warm water. We recommend using FOREO's Silicone Cleaning Spray and rinsing with warm water afterward for optimal results. Pat dry with a lint-free cloth or towel. Never use cleaning products containing alcohol, petrol or acetone, as they may irritate the skin.

Avoid using clay-based, silicone-based serums and creams with this FOREO device.

Avoid leaving your IRIS™ in direct sunlight and never expose it to extreme heat or boiling water.

For reasons of hygiene, we do not recommend sharing your IRIS™ with anyone else. Using the IRIS™ should be comfortable – if you experience discomfort, discontinue use immediately and consult a physician. We recommend that you avoid using either mode of your device for more than 3 minutes at a time. If you have a skin condition, please consult a dermatologist before use. Exercise particular care when applying the device to the under-eye regions and do not bring the device into contact with the eyelids or onto the eyeballs.

**NOTE:** Close supervision is necessary when this device is used by, on, or near children.

## TROUBLESHOOTING

*The LED does not pulse when charger is connected?*

- Battery is fully charged, ready for up to 50 eye-massing routines.
- Battery is drained and will require several minutes to acknowledge charging cable.
- Charging cable is not properly connected. Check socket and charging port.

*The IRIS™ does not activate when the center button is pressed?*

- Battery is empty. Recharge your IRIS™.
- Interface is locked. Unlock it by holding down "+" and "-" buttons together.

*The IRIS™ cannot be switched off and/or interface buttons do not respond?*

- Microprocessor is temporarily malfunctioning. Connect the charging cable to restore function to normal.

*The IRIS™'s silicone surfaces have degraded to a sticky or bubbly texture?*

- Discontinue use. Silicone is highly durable, but degrades under certain conditions – consult this manual's Cleaning, Storage and Safety section for how to prevent this.

If you experience any other problems with your IRIS™, or if you have any questions regarding its operation, please visit [foreo.com/support](http://foreo.com/support).

## WARRANTY TERMS AND CONDITIONS

### REGISTER WARRANTY

To activate your 2-Year Limited Warranty, register the number provided on the FOREO Magnetic Card at [foreo.com/support](http://foreo.com/support).

### 2-YEAR LIMITED WARRANTY

FOREO warrants this device for a period of TWO (2) YEARS after the original date of purchase against defects due to faulty workmanship or materials arising from Normal Use of the device. The warranty covers working parts that affect the function of the device. It does NOT cover cosmetic deterioration caused by fair wear and tear, or damage caused by accident, misuse or neglect. Any attempt to open or take apart the device (or its accessories) will void the warranty.

If you discover a defect and notify FOREO during the warranty period, FOREO will, at its discretion, replace the device free of charge. Claims under warranty must be supported by reasonable evidence that the date of the claim is within the warranty period. To validate your warranty, please keep your original purchase receipt together with these warranty conditions for the duration of the warranty period.

This 2-Year Limited Warranty is exclusive of all other warranties, whether oral or written, express or implied. There are no implied warranties created by the manufacture, sale or use of the product. To claim your warranty, you must log in to your account at [www.foreo.com](http://www.foreo.com) then select the option to make a warranty claim. Shipping costs are nonrefundable. This undertaking is in addition to your statutory rights as a consumer and does not affect those rights in any way.

## DISPOSAL INFORMATION

Disposal of old electronic equipment (applicable in the EU and other European countries with separate waste collection systems). The crossed-out dustbin symbol indicates that this device should not be treated as household waste, but rather be brought to the appropriate collection point for the recycling of electrical and electronic equipment.



## SPECIFICATIONS

MATERIALS:	Silicone
COLORS:	Magenta, Petal Pink, Mint, Black
SIZE (W x H):	39.3 x 31.7 x 120.4 mm
WEIGHT:	70 g
BATTERY:	Li-Ion 200 mAh 3.7 V
USER TIME:	Up to 50 uses
STANDBY:	90 days
FREQUENCY:	120 Hz
MAX NOISE LEVEL:	50 dB
INTERFACE:	3-button

**Disclaimer:** FOREO reserves the right to revise this publication and to make changes from time to time in the contents thereof without obligation to notify any person of such revision or changes. For complete, up-to-date terms, conditions and warnings please consult the full user manual at [foreo.com/support](http://foreo.com/support).

Model may be changed for improvements without notice.

©2017 FOREO AB. ALL RIGHTS RESERVED.

EU DISTR.: FOREO AB, BIRGER JARLSGATAN 22, 114 34 STOCKHOLM, SWEDEN.

US DISTR.: FOREO INC., 1525 E PAMA LANE, LAS VEGAS, NV 89119, USA.

DESIGNED AND DEVELOPED BY FOREO SWEDEN.

MANUFACTURED FOR FOREO AB.

[WWW.FOREO.COM](http://WWW.FOREO.COM)