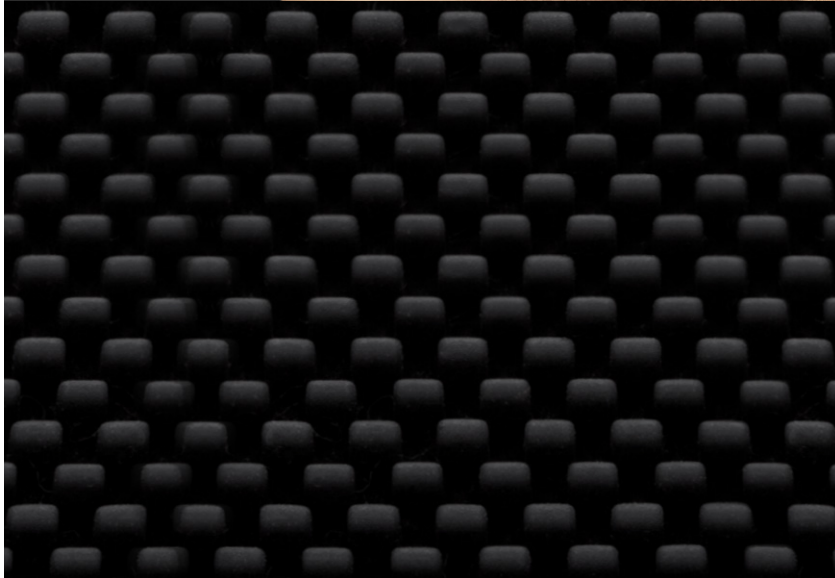
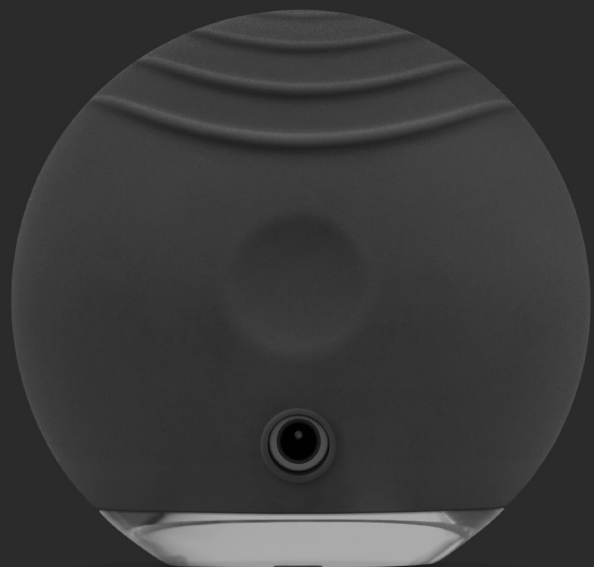


FOREO



LUNA™ go for MEN

COMPLETE MEN'S
SKINCARE ON THE
GO!



FULL USER MANUAL

GETTING STARTED

Congratulations on taking the first step towards flawless skin anytime, anywhere by acquiring the LUNA™ go for MEN T-Sonic™ facial-cleansing and anti-aging system. Before you begin to enjoy all the benefits of this innovative skincare technology whenever you want without compromise, please take a few moments to carefully read the instructions in this manual.

Please **READ ALL INSTRUCTIONS BEFORE USE** and utilize this product only for its intended use as described in this manual.

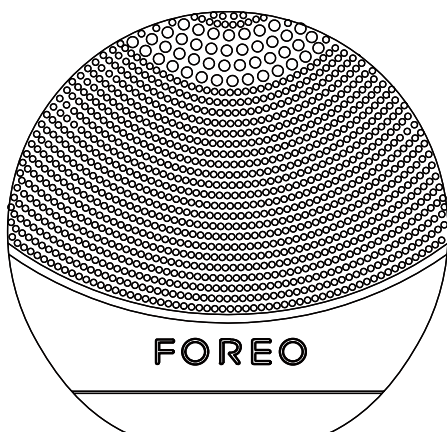
⚠ WARNING: NO MODIFICATION OF THIS EQUIPMENT IS ALLOWED.

LUNA™ go for MEN OVERVIEW

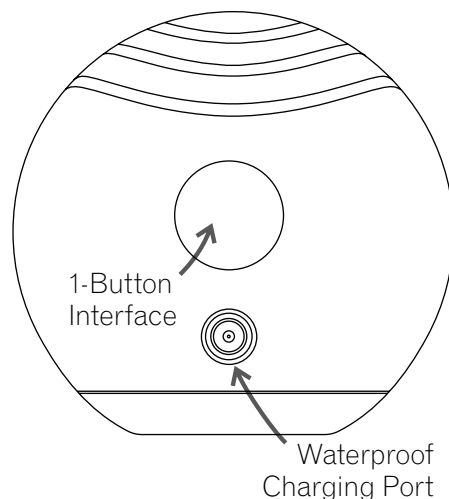
Experience all the advantages of advanced skincare in one small yet high-tech device, engineered specifically with a man's skin in mind.

The LUNA™ go for MEN's Cleansing Mode directs T-Sonic™ pulsations through rounded silicone touch-points to remove impurities while cleansing deeply in a way that protects the skin's moisture barrier. Not only does this refresh the look and feel of your skin, it also conditions the face for a more comfortable shave. In Anti-Aging Mode, the LUNA™ go for MEN channels lower-frequency pulsations through a curved surface of concentric ridges to help reduce the visible signs of aging.

Cleansing Brush
Surface



Anti-Aging
Surface



USING YOUR LUNA™ MEN

The LUNA™ go for MEN's cleansing brush has broad silicone touch-points, allowing T-Sonic™ pulsations to refresh men's thicker skin, while deeply cleansing the natural oils from their more active sebaceous glands. To maximize the skincare benefits of the LUNA™ go for MEN, we suggest you use it for 2 minutes each morning and evening.

MODE SELECT

1. Press the center button once to turn on your LUNA™ go for MEN. When activated, it will be in Cleansing Mode.
2. Press the center button again to put the device on Standby (on Standby, the indicator will emit a steady glow and the pulsations will stop, giving you the chance to rinse your face).
3. Press the center button a third time to activate the Anti-Aging Mode.
4. Press the center button once more to deactivate your LUNA™ go for MEN .

The individual stages of FOREO's cleansing and anti-aging routines are described below. After each stage of these routines, you will feel the T-Sonic™ pulsations momentarily pause and see the indicator light flash, prompting you to move on to the next area of your face.

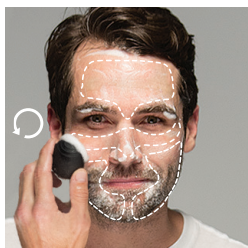
CLEANSING MODE

Channeled through nonabrasive silicone touch-points, T-Sonic™ pulsations drive out 99.5% of dirt and oil*, as well as dead skin cells, conditioning the face for a more comfortable shave. skin cells.



1. APPLY CLEANSER

Wet the LUNA™ go for MEN then dampen your face and apply your regular cleansing product. Turn on your LUNA™ go for MEN by pressing the center button once activating the Cleansing Mode.



2. CLEANSE THE FOLLOWING ZONES:

Every 15 seconds pulsations will pause to indicate when to cleanse a new zone.

- Cleanse your chin and cheek using circular movements and repeat on the other side.
- Starting from the center, cleanse your forehead with gentle outward circular strokes.
- Cleanse the nose by gliding up and down one side, then the other. Delicately cleanse the under-eye region using outward strokes.

After 1 minute, the pulsations will pause 3 times, indicating the end of the cleansing routine. Press the center button once more to put the LUNA™ go for MEN on Standby.



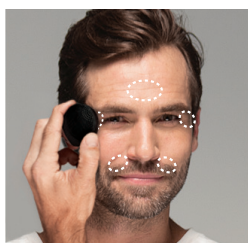
3. RINSE

Rinse and dry your face to complete the 1-minute cleansing routine. Then, apply your favorite skincare products, if any.

ANTI-AGING MODE

The LUNA™ go for MEN's Anti-Aging Mode diminishes the appearance of fine lines and wrinkles, and leaves the skin looking firmer and more elastic.

From Standby, press the center button to activate the Anti-Aging Mode. Try spending around 12 seconds on each stage of the routine; after this interval the LUNA™ go for MEN's pulsations will pause momentarily. Close your eyes, relax your face and press the LUNA™ go for MEN's anti-aging surface to the following wrinkle-prone areas, where muscle tension can cause worry lines, crow's feet and laugh lines:



1. Region between the eyebrows
2. Right temple
3. Right nasolabial fold
4. Left nasolabial fold
5. Left temple

After 1 minute, you will feel the pulsations pause 3 times in quick succession, indicating the end of anti-aging routine.

Please note that to prevent overuse, the LUNA™ go for MEN will automatically switch itself off if left for 3 minutes in Cleansing or Anti-Aging Mode.

CAUTION: If you experience any discomfort when using your FOREO device, discontinue use immediately and consult a physician.

*Based on clinical tests, results on file.

CLEANING YOUR LUNA™ go for MEN

Always clean the LUNA™ go for MEN thoroughly after use. Wash the brush surfaces with water and soap, then rinse with warm water. Pat dry with a lint-free cloth or towel. We recommend spraying the device with FOREO's Silicone Cleaning Spray and rinsing with warm water afterwards for optimal results.

NOTE: Never use cleaning products containing alcohol, petrol or acetone, as they may irritate the skin.

CHARGING

Your FOREO device is rechargeable with its included charger. One hour of charging delivers a full charge which lasts for up to 1 month which lasts for up to 60 uses.

- Insert the DC connector into the LUNA™ go for MEN's charging port.
- Insert the mains plug into a socket. The LUNA™ go for MEN's LED indicator will flash repeatedly to indicate the battery is charging. When it is fully charged (after approximately 1 hour), the LED indicator will emit a steady glow.
- When the battery is running low, the LED indicator on your LUNA™ go for MEN will emit a blinking white light.

CAUTION: Before charging, make sure the charging port and charger are free from water and cleanser residue. Do not charge the LUNA™ go for MEN in any location where it or the charger may become immersed in water. Do NOT use your FOREO device while charging and do NOT charge for more than 24 hours. Only use the FOREO-provided charger.

IMPORTANT FOR OPTIMUM SAFETY:

- Avoid using clay-based, silicone-based or grainy cleansers, exfoliators or scrubs, as they may damage the LUNA™ go for MEN's soft silicone touch-points.
- If you have a skin condition or any medical concerns, please consult a dermatologist before use.
- Cleansing with the LUNA™ go for MEN should be comfortable – if you experience discomfort, discontinue use immediately and consult a physician.
- Exercise particular care when cleansing the under-eye regions and do not bring the device into contact with the eyelids or eyes themselves.
- For reasons of hygiene, we do not recommend sharing your LUNA™ go for MEN with anyone else.
- Avoid leaving your LUNA™ go for MEN in direct sunlight and never expose it to extreme heat or boiling water.
- Close supervision is necessary when this device is used by, on, or near children, as well as those with reduced physical and mental abilities.
- Never use the device or charger if they are damaged, and only use the charger supplied by FOREO with the device.
- Discontinue use if this product appears damaged in any way. This product contains no serviceable parts.
- To avoid the risk of electric shock, this equipment must only be connected to a supply mains with protective earth.
- Given the efficiency of the FOREO cleansing and anti-aging routines, we recommend that you do not use the LUNA™ go for MEN's Cleansing or Anti-Aging Modes for more than 3 minutes at a time.
- Use this device only for its intended use as described in this manual.

TROUBLESHOOTING

LED does not pulse when charger is connected?

- Battery is fully charged, ready for up to 60 full cleansing and anti-aging routines.
- Battery is drained and will require several minutes to acknowledge charging cable.
- Charging cable is not properly connected. Check wall socket and charging port.

The LUNA™ go for MEN does not activate when the center button is pressed?

- Battery is empty. Recharge your LUNA™ go for MEN.

The LUNA™ go for MEN cannot be switched off and/or interface buttons do not respond?

- Microprocessor is temporarily malfunctioning. Connect the charging cable to restore function to normal.

The LUNA™ go for MEN's silicone surfaces have degraded to a sticky or bubbly texture?

- Discontinue use. Silicone is highly durable, but degrades under certain conditions – consult this manual's Cleaning and Safety sections for how to prevent this.

If you do not find the answer to your specific question in the troubleshooting section, or if you have any other questions regarding the device's operation, please visit the Customer Care section of www.foreo.com.

DISPOSAL INFORMATION

Disposal of old electronic equipment (applicable in the EU and other European countries with separate waste collection systems).



The crossed-out dustbin symbol indicates that this device should not be treated as household waste, but rather be brought to the appropriate collection point for recycling of electrical and electronic equipment. By ensuring this device is disposed of correctly, you will help prevent the potential negative consequences for the environment and human health which could be caused by inappropriate waste handling of the product. The recycling of materials will also help conserve natural resources.

For more information about the recycling of your device, please contact your local household waste disposal service or your place of purchase.

SPECIFICATIONS

MATERIALS:	Body-safe silicone & ABS
COLOR:	Black
SIZE:	50 x 50 mm
WEIGHT:	42.7 g
BATTERY:	Li-ion 70 mAh
USAGE:	up to 60 uses
STANDBY:	100 days
FREQUENCY:	125 Hz
MAX NOISE LEVEL:	<63 dB
INTERFACE:	1-button

Disclaimer: Users of this device do so at their own risk. Neither FOREO nor its retailers assume any responsibility or liability for any injuries or damages, physical or otherwise, resulting, directly or indirectly, from the use of this device. Further, FOREO reserves the right to revise this publication and to make changes from time to time in the contents thereof without obligation to notify any person of such revision or changes.

Model may be changed for improvements without notice.

©2018 FOREO AB. ALL RIGHTS RESERVED.

EU DISTR.: FOREO AB, KARLAVÄGEN 41, 114 31 STOCKHOLM, SWEDEN.

US DISTR.: FOREO INC., 1525 E PAMA LANE, LAS VEGAS, NV 89119, USA.

AUS DISTR.: 6 PROHASKY STREET, PORT MELBOURNE, VIC, 3207 AUSTRALIA.

DESIGNED AND DEVELOPED BY FOREO SWEDEN.

MANUFACTURED FOR FOREO AB.

WWW.FOREO.COM