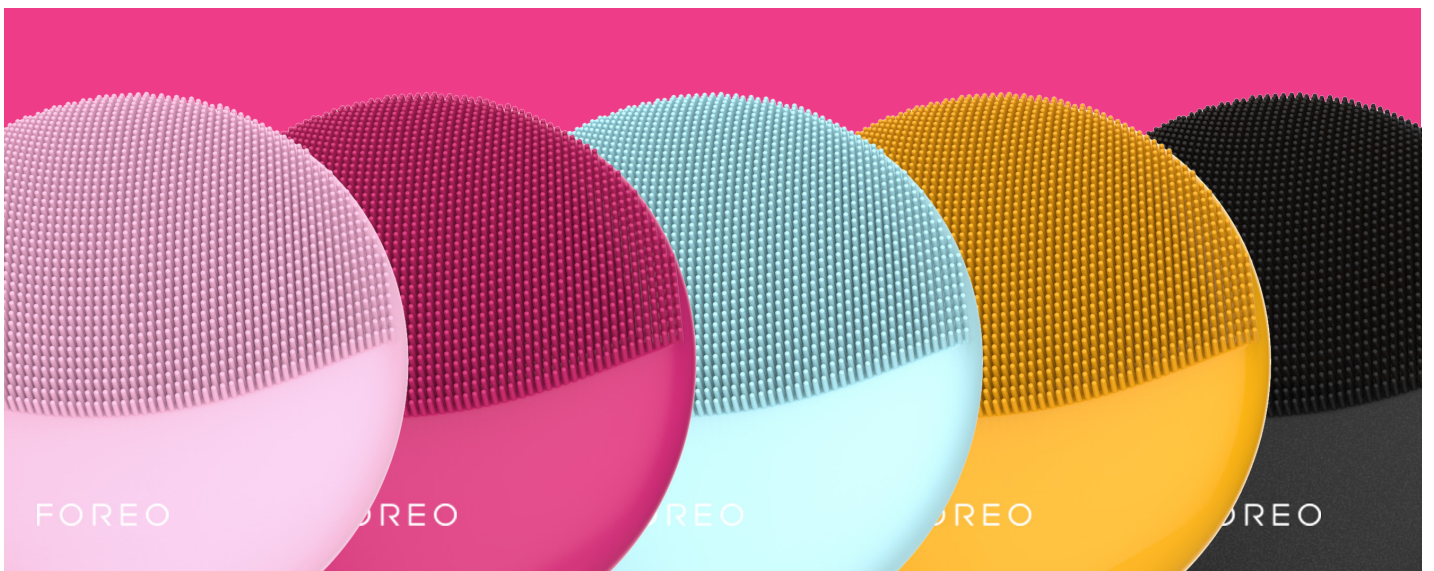


# FOREO

## LUNA™ mini 3

**THE ULTIMATE POST-WORKOUT  
CLEANSE FOR A FRESH, HEALTHY GLOW**



# FULL USER MANUAL



## GETTING STARTED

Congratulations on taking the first step toward discovering smarter skincare by acquiring LUNA mini 3. Before you begin to enjoy all the benefits of sophisticated skincare technology in the comfort of your home, please take a few moments to carefully read the instructions in this manual.

Please READ ALL INSTRUCTIONS BEFORE USE and utilize this product only for its intended use as described in this manual.

⚠ WARNING: NO MODIFICATION OF THIS EQUIPMENT IS ALLOWED.

## LUNA MINI 3 OVERVIEW

Upgrade your post-workout skincare routine with LUNA mini 3. Featuring extra-gentle silicone touchpoints and 8,000 T-Sonic pulsations per minute at 12 intensities, this ultra-hygienic cleansing device expertly lifts away dirt, oil and sweat for a fresh, healthy glow. Perfect for an active lifestyle, this gym bag-friendly device offers a 30-second glow boost mode for fast yet gentle facial cleansing, and a cute, compact design ideal for skincare on-the-go.

## GETTING TO KNOW LUNA MINI 3

### T-SONIC PULSATIONS

Effectively cleanse skin with 8,000 T-Sonic pulsations per minute at 12 intensities

### THINNER TOUCHPOINTS

Gently cleanse sensitive or normal skin and larger areas like the cheeks

### ULTRA-HYGIENIC SILICONE

35x more hygienic than nylon and nonporous to prevent bacteria buildup

### SMART SWEDISH DESIGN

Ergonomic, lightweight, with no replacement brush heads needed



### THICKER TOUCHPOINTS

Provide a deep precision cleanse of areas such as the T-zone

### GLOW BOOST MODE

Quick-press cleansing for glowing skin in only 30 seconds

### UNIVERSAL POWER BUTTON

Turns device on and off and puts device in Bluetooth pairing mode

### CHARGING PORT

Up to 400 uses per charge. 100% waterproof closure

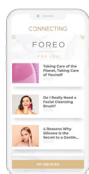
### INDICATOR LIGHT

Flashes to indicate when device is in Bluetooth pairing mode and when device needs to be charged



### 2ML SAMPLE SERUM

Replenishes skin to restore optimal moisture levels



### INTERACTIVE FOREO APP

Controls device settings and adjusts cleansing intensities.



### USB CABLE

Charge anytime, anywhere



### TRAVEL POUCH

Stylishly protects device for skincare anywhere.

## HOW TO USE LUNA MINI 3

Before your first cleanse, press universal button once to sync the device with the FOREO app and choose your cleansing intensity.

- 1 Remove all makeup, dampen skin and then apply your FOREO Micro-Foam Cleanser.
- 2 Press universal button once for cleansing mode or quick-press twice for glow boost mode.\*
- 3 Cleanse using circular movements on cheeks and forehead, gliding up and down the nose.
- 4 Press and hold button for 3 seconds to turn off device.
- 5 Rinse and pat your face dry.

*\*Device will automatically switch off after 30 seconds in glow boost mode*



## CLEANING YOUR LUNA MINI 3

Always clean LUNA mini 3 thoroughly after use. Wash the brush surface with water and soap, then rinse with warm water. Avoid using clay-based, silicone-based or grainy cleansers, exfoliators or scrubs, as they may damage LUNA mini 3's soft silicone. Pat dry with a lint-free cloth or towel. After use, we recommend spraying the device with FOREO Silicone Cleaning Spray and rinsing with warm water for optimal results.

NOTE: Never use cleaning products containing alcohol, petrol or acetone, as they may irritate the skin and damage the silicone.

## IMPORTANT FOR OPTIMUM SAFETY:

- If you have a skin condition or any medical concerns, please consult a physician before use.
- Cleansing with LUNA mini 3 should be comfortable – if you experience discomfort, discontinue use immediately and consult a physician.
- Exercise particular care when cleansing the under-eye regions and do not bring the device into contact with the eyelids or eyes themselves.
- For reasons of hygiene, we do not recommend sharing your LUNA mini 3 with anyone else.
- Avoid leaving your LUNA mini 3 in direct sunlight and never expose it to extreme heat or boiling water.
- Close supervision is necessary when this device is used by, on, or near children, as well as those with reduced physical and mental abilities.
- Discontinue use if this product appears damaged in any way. This product contains no serviceable parts.
- Given the efficiency of the FOREO cleansing routine, we recommend that you do not use LUNA mini 3 for more than 3 minutes at a time.
- Use this device only for its intended use as described in this manual. If you do not find the answer to your specific question, or if you have any other questions regarding the device's operation, please visit [foreo.com/support](https://foreo.com/support).

## TROUBLESHOOTING

### PRECAUTIONS TO BE TAKEN IN THE EVENT OF CHANGES IN THE PERFORMANCE OF LUNA MINI 3.

If LUNA mini 3 is not activated when pressing the center button:

- Battery is empty. Recharge using USB charging cable for 1.5 hours until fully charged and then restart your device by holding down the power button.

If LUNA mini 3 cannot be switched off and/or interface buttons do not respond:

- Microprocessor is temporarily malfunctioning. Press and hold the power button to restart the device.

If LUNA mini 3 won't sync to the FOREO app:

- Switch your Bluetooth off and then on again to try reconnecting.
- Close the FOREO app and then reopen it to start the process over.
- Check to see if the app needs to be updated in your mobile device's app store.

## WARRANTY TERMS & CONDITIONS

### REGISTER WARRANTY

To activate your 2-Year Limited Warranty and 10-Year Quality Guarantee, register through the FOREO app, or visit [foreo.com/product-registration](https://foreo.com/product-registration) for more information.

### 2-YEAR LIMITED WARRANTY

FOREO warrants this device for a period of TWO (2) YEARS after the original date of purchase against defects due to faulty workmanship or materials arising from Normal Use of the device. The warranty covers working parts that affect the function of the device. It does NOT cover cosmetic deterioration caused by fair wear and tear, or damage caused by accident, misuse or neglect. Any attempt to open or take apart the device (or its accessories) will void the warranty.

If you discover a defect and notify FOREO during the warranty period, FOREO will, at its discretion, replace the device free of charge. Claims under warranty must be supported by reasonable evidence that the date of the claim is within the warranty period. To validate your warranty, please keep your original purchase receipt together with these warranty conditions for the duration of the warranty period.

To claim your warranty, you must log in to your account at [www.foreo.com](https://www.foreo.com) and then select the option to make a warranty claim. Shipping costs are nonrefundable. This undertaking is in addition to your statutory rights as a consumer and does not affect those rights in any way.

### 10-YEAR QUALITY GUARANTEE

As a continuation of the terms of FOREO's TWO (2) Year Limited Warranty, FOREO's TEN (10) Year Quality Guarantee makes owners eligible to purchase a new device from [www.foreo.com](https://www.foreo.com) for 50% of the listed price.

## DISPOSAL INFORMATION

Disposal of old electronic equipment (applicable in the EU and other European countries with separate waste collection systems).



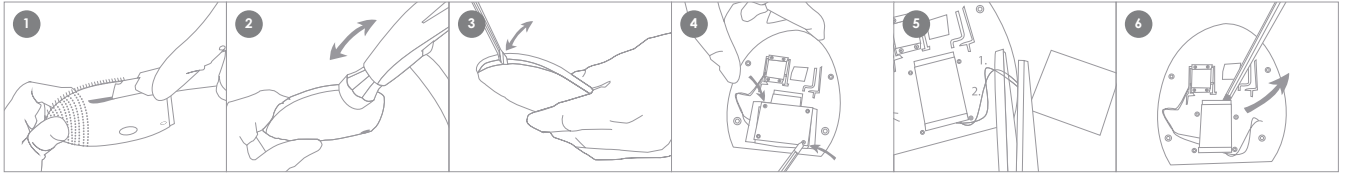
The crossed-out dustbin symbol indicates that this device should not be treated as household waste, but rather be brought to the appropriate collection point for recycling of electrical and electronic equipment. By ensuring this device is disposed of correctly, you will help prevent the potential negative consequences for the environment and human health which could be caused by inappropriate waste handling of the product. The recycling of materials will also help conserve natural resources.

For more information about the recycling of your device, please contact your local household waste disposal service or your place of purchase.

## BATTERY REMOVAL

NOTE: This process is not reversible. Opening the device will void its warranty. This action must only be undertaken when the device is ready to be disposed of.

Because this device contains a lithium-ion battery, the battery must be removed before disposal and should not be thrown away with household waste. To remove the battery, open the inner plastic shell after removing silicone outer layer and remove the battery to be disposed of in accordance with your local environmental regulations. Wear gloves during this process for your safety. Detailed visual instructions are provided below:



## SPECIFICATIONS

**MATERIALS:** Body-safe silicone & ABS plastic

**COLOR:** Mint/Fuchsia/Midnight/Pearl Pink/  
Sunflower Yellow

**SIZE:** 80 x 78 x 38 mm

**WEIGHT:** 87g

**BATTERY:** Li-ion 530mAh 3.7V

**USAGE:** Up to 400 uses

**STANDBY:** 90 days

**FREQUENCY:** 100 Hz

**MAX NOISE LEVEL:** <50dB

**INTERFACE:** 1- button

Disclaimer: Users of this device do so at their own risk. Neither FOREO nor its retailers assume any responsibility or liability for any injuries or damages, physical or otherwise, resulting, directly or indirectly, from the use of this device. Further, FOREO reserves the right to revise this publication and to make changes from time to time in the contents thereof without obligation to notify any person of such revision or changes.

Any changes or modifications not expressly approved by the party responsible for compliance could void the user's authority to operate the equipment. This device complies with part 15 of the FCC Rules. Operation is subject to the following two conditions: (1) This device may not cause harmful interference, and (2) this device must accept any interference received, including interference that may cause undesired operation.

RF exposure statement: This equipment complies with FCC radiation exposure limits set forth for an uncontrolled environment. The device has been evaluated to meet general RF exposure requirement. The device can be used in portable exposure condition without restriction.

MODEL MAY BE CHANGED FOR IMPROVEMENTS WITHOUT NOTICE.

©2019 FOREO AB. ALL RIGHTS RESERVED.

EU DISTR.: FOREO AB, KARLAVÄGEN 41, 114 31 STOCKHOLM, SWEDEN.

US DISTR.: FOREO INC., 1525 E PAMA LANE, LAS VEGAS, NV 89119, USA.

AUS DISTR.: 6 PROHASKY STREET, PORT MELBOURNE, VIC, 3207 AUSTRALIA.

DESIGNED AND DEVELOPED BY FOREO SWEDEN.

MANUFACTURED FOR FOREO AB.

[WWW.FOREO.COM](http://WWW.FOREO.COM)