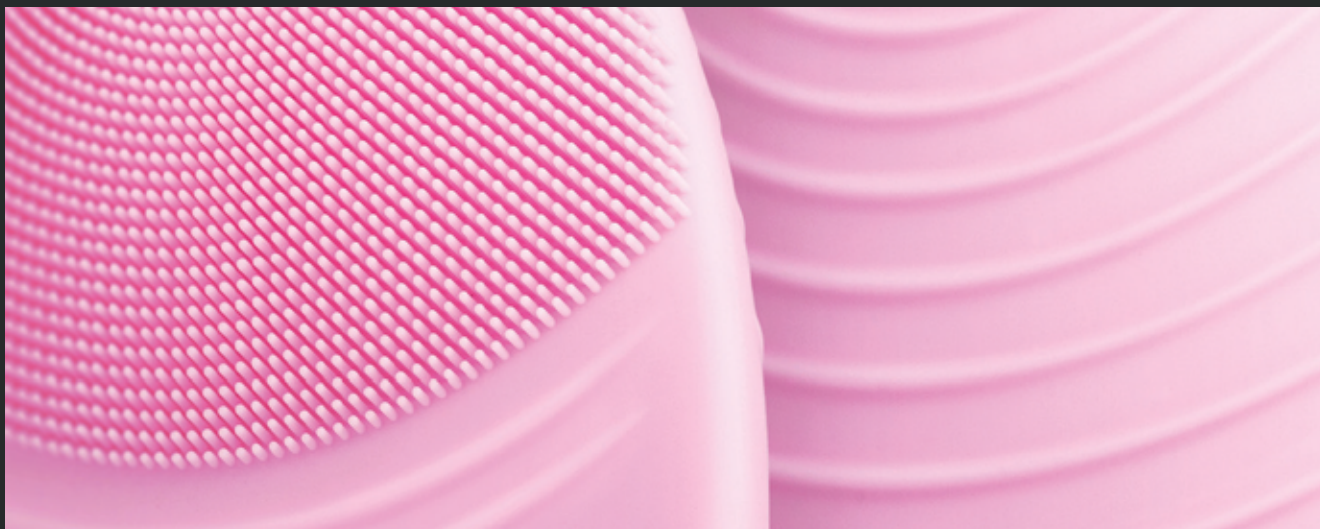


FOREO



LUNA™ 2
professional

HIGH-PERFORMANCE
DEEP CLEANSING &
FIRMING FACIAL MASSAGE



FULL USER MANUAL

GETTING STARTED

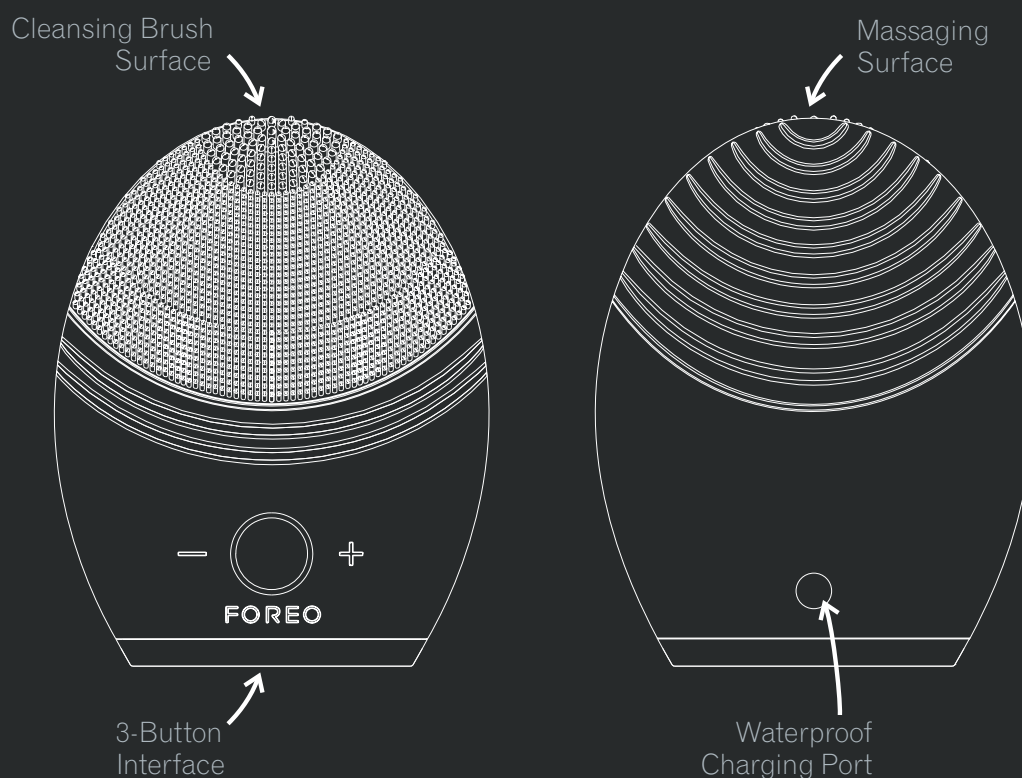
The LUNA™ 2 professional brings an exceptional spa-like skincare experience to users at home thanks to its enhanced technology and optimized design to leave skin illuminated, renewed and beautified

Please READ ALL INSTRUCTIONS BEFORE USE and utilize this product only for its intended use as described in this manual.

⚠ WARNING: NO MODIFICATION OF THIS EQUIPMENT IS ALLOWED.

OVERVIEW

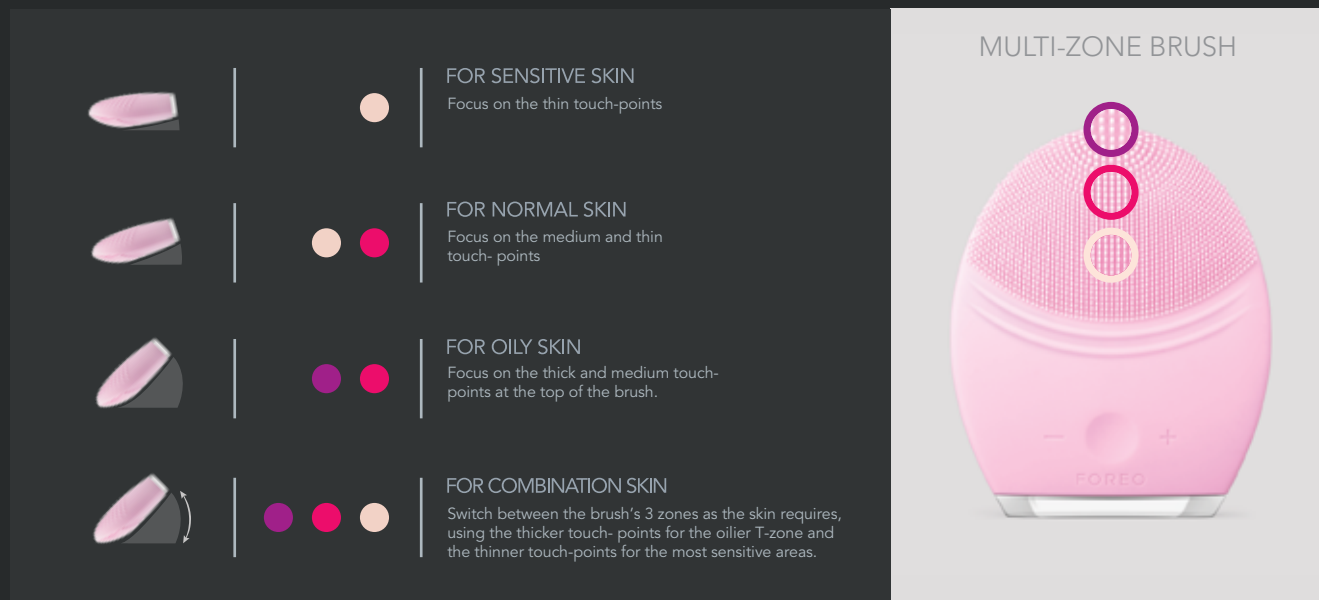
The LUNA™ 2 professional integrates the most sophisticated and powerful cleansing system of all FOREO devices with its Dual T-Sonic™ technology (alternating 2-point transdermal sonic pulses). Two motors – that are double the power – each generate up to 8,000 pulsations per minute for even deeper cleansing, lifting away 99.5% of dirt and oil* as well as makeup residue. Dead skin cells are also lifted away, diminishing the appearance of pores and improving the absorption of favorite skincare products. Furthermore, the LUNA™ 2 professional includes a unique firming massage feature which channels lower-frequency massaging pulsations onto wrinkle-prone areas, lessening the appearance of fine lines and wrinkles while leaving the skin feeling firmer and more elastic.



* Based on clinical tests, results on file

USING YOUR LUNA™ 2 PROFESSIONAL

For tailor-made skincare, FOREO has engineered a completely new brush for superior cleansing and to better fit the different needs of all women. The unique gradation of thinner to thicker touch-points cleanses all skin types, as well as the different areas of the face.



With 12 pulsation intensities and a premium multi-zone brush, the LUNA™ 2 professional is designed to suit all skin types and offer tailored cleansing for different facial areas. By adjusting the angle, one can gently cleanse sensitive/normal skin and larger areas like the cheeks with its thinner touch-points, and deeply cleanse oilier skin, the T-zone and hard-to-reach areas with its thicker touch-points for customizable skincare.

MODE SELECT

1. Press the center button once to turn on your LUNA™ 2 professional. When activated, it will be in Cleansing Mode.
2. Press the center button again to put the device on Standby (on Standby, the indicator will emit a steady glow and the pulsations will stop, giving you the chance to rinse your face).
3. Press the center button a third time to activate the Firming Massage Mode.
4. Press the center button once more to deactivate your LUNA™ 2 professional.

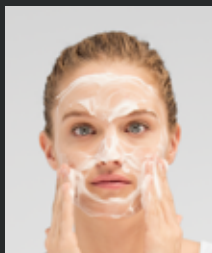
The intensities of the LUNA™ 2 professional's Cleansing and Firming Massage Modes are adjustable for comfort in 12 intensities to suit every user's comfort and efficacy requirements using the +/- buttons, with a memory function that will remember your preferences for the next time the device is used.

The individual stages of FOREO's cleansing and anti-aging massaging routines are described below. After each stage of these routines, you will feel the dual T-Sonic™ pulsations momentarily pause and see the indicator light flash, prompting you to move on to the next area of your face.

NOTE: The LUNA™ 2 professional may be locked when first unboxed – unlock it by holding down the + and – buttons together. The light will flash to indicate that your device is unlocked. Should you wish to lock your device for travel convenience, follow the same procedure.

CLEANSING MODE

The LUNA™ 2 professional's Cleansing Mode removes 99.5% of dirt and oil*, as well as makeup residue and dead skin cells.



1. APPLY CLEANSER

Remove all makeup, wet the LUNA™ 2 professional then dampen your face and apply your regular cleansing product. Turn on your LUNA™ 2 professional by pressing the center button once, activating the Cleansing Mode.



2. CLEANSE THE FOLLOWING ZONES:

Every 15 seconds pulsations will pause to indicate when to cleanse a new zone.

- Massage your chin and cheek using circular movements and repeat on the other side.
- Starting from the center, massage your forehead with gentle outward circular strokes.
- Massage the nose by gliding up and down one side, then the other. Delicately massage the under-eye region using outward strokes – we suggest reducing the pulsation intensity.

After 1 minute, the pulsations will pause 3 times, indicating the end of the cleansing routine.

Press the center button once more to put the LUNA™ 2 professional on Standby.



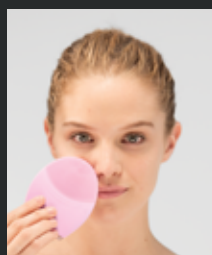
3. RINSE

Rinse and dry your face to complete the 1-minute cleansing routine. Then, apply your favorite skincare products, if any.

FIRMING MASSAGE MODE

The LUNA™ 2 professional's Firming Massage Mode diminishes the appearance of fine lines and wrinkles, and leaves the skin looking firmer and more elastic.

From Standby, press the center button to activate the Firming Massage Mode. Try spending around 12 seconds on each stage of the routine; after this interval the LUNA™ 2 professional's pulsations will pause momentarily. Relax your face and press the LUNA™ 2 professional's anti-aging surface to the following wrinkle-prone areas, where muscle tension can cause worry lines, crow's feet and laugh lines:



1. Region between the eyebrows
2. Right temple
3. Right nasolabial fold
4. Left nasolabial fold
5. Left temple

After 1 minute, you will feel the pulsations pause 3 times in quick succession, indicating the end of anti-aging routine.

Please note that to prevent overuse, the LUNA™ 2 professional will automatically switch itself off if left for 3 minutes in Cleansing or Firming Massage Mode.

CAUTION: If you experience any discomfort when using your FOREO device, discontinue use immediately and consult a physician.

* Based on clinical tests, results on file

CLEANING YOUR DEVICE

Always clean your device thoroughly after use. Wash the brush surface with water and soap, then rinse with warm water. Avoid using clay-based, silicone-based or grainy cleansers, exfoliators or scrubs, as they may damage the device's soft silicone touchpoints. Pat dry with a lint-free cloth or towel. After use, we recommend spraying the device with FOREO Silicone Cleaning Spray and rinsing with warm water for optimal results.

NOTE: Never use cleaning products containing alcohol, petrol or acetone, as they may irritate the skin and damage the silicone.

CHARGING

Your FOREO device is rechargeable with its included charging cable. One hour of charging delivers a full charge which lasts for over 7 months of use.

- Insert the DC connector into the LUNA™ 2 professional's charging port.
- Connect the USB cable into a charging point. LUNA™ 2 professional's LED indicator will flash repeatedly to indicate the battery is charging. When it is fully charged (after approximately 1 hour), the LED indicator will emit a steady glow.
- When the battery is running low, the LED indicator on your LUNA™ 2 professional will emit a blinking white light.

CAUTION: Before charging, make sure the charging port and charging cable are free from water and cleanser residue. Do not charge the LUNA™ 2 professional in any location where it or the charging cable may become immersed in water. Do NOT use your FOREO device while charging and do NOT charge for more than 24 hours. Only use the FOREO-provided charging cable.

IMPORTANT FOR OPTIMUM SAFETY:

- Avoid using clay-based, silicone-based or grainy cleansers, exfoliators or scrubs, as they may damage the LUNA™ 2 professional's soft silicone touch-points.
- If you have a skin condition or any medical concerns, please consult a dermatologist before use.
- Cleansing with the LUNA™ 2 professional should be comfortable – if you experience discomfort, discontinue use immediately and consult a physician.
- Exercise particular care when cleansing the under-eye regions and do not bring the device into contact with the eyelids or eyes themselves.
- For reasons of hygiene, we do not recommend sharing your LUNA™ 2 professional with anyone else.
- Avoid leaving your LUNA™ 2 professional in direct sunlight and never expose it to extreme heat or boiling water.
- Close supervision is necessary when this device is used by, on, or near children, as well as those with reduced physical and mental abilities.
- Never use the device or charging cable if they are damaged, and only use the charging cable supplied by FOREO with the device.
- Discontinue use if this product appears damaged in any way. This product contains no serviceable parts.
- To avoid the risk of electric shock, this equipment must only be connected to a supply mains with protective earth.

- Given the efficiency of the FOREO cleansing and firming massage routines, we recommend that you do not use the LUNA™ 2 Professional's Cleansing or Anti-aging Modes for more than 3 minutes at a time.
- Use this device only for its intended use as described in this manual.

TROUBLESHOOTING

LED does not pulse when charging cable is connected?

- Battery is fully charged, ready for up to 450 full cleansing and anti-aging routines.
- Battery is drained and will require several minutes to acknowledge charging cable.
- Charging cable is not properly connected. Check wall socket and charging port.

The LUNA™ 2 Professional does not activate when the center button is pressed?

- Battery is empty. Recharge your LUNA™ 2 Professional.
- Interface is locked. Unlock it by holding down + and – buttons together.

The LUNA™ 2 Professional cannot be switched off and/or interface buttons do not respond?

- Microprocessor is temporarily malfunctioning. Connect the charging cable to restore function to normal.

The LUNA™ 2 Professional's silicone surfaces have degraded to a sticky or bubbly texture?

- Discontinue use. Silicone is highly durable, but degrades under certain conditions – consult this manual's

Cleaning and Safety sections for how to prevent this.

If you do not find the answer to your specific question in the troubleshooting section, or if you have any other questions regarding the device's operation, please visit the Customer Care section of www.foreo.com.

WARRANTY TERMS AND CONDITIONS

REGISTER WARRANTY

To activate your 2-Year Limited Warranty register the number provided on the FOREO Authenticity Card at www.foreo.com Warranty and Returns section under Customer Care.

2-YEAR LIMITED WARRANTY

FOREO warrants this device for a period of TWO (2) YEARS after the original date of purchase, against defects due to faulty workmanship or materials. If you discover a defect and notify FOREO during the warranty period, FOREO will, at its discretion, replace the device free of charge.

The warranty covers working parts that affect the device's function. It does NOT cover purely cosmetic deterioration caused by fair wear and tear or damage caused by accident, misuse or neglect. Any attempt to open or disassemble the device (or its accessories) will void the warranty.

For any warranty claim, reasonable evidence must be provided that the date of the claim is within the warranty period. For this reason, please keep your original purchase receipt for the duration of the warranty period.

To claim your warranty, you must first register and log in to your account on www.foreo.com, then select the option to make a warranty claim. You will be sent a Return Merchandise Authorization (RMA) number which should be returned with the FOREO product to your nearest FOREO office. Shipping costs are non-refundable. This undertaking is in addition to your statutory rights as a consumer and does not affect those rights in any way.

DISPOSAL INFORMATION

Disposal of old electronic equipment (applicable in the EU and other European countries with separate waste collection systems).



The crossed-out dustbin symbol indicates that this device should not be treated as household waste, but rather be brought to the appropriate collection point for recycling of electrical and electronic equipment. By ensuring this device is disposed of correctly, you will help prevent the potential negative consequences for the environment and human health which could be caused by inappropriate waste handling of the product. The recycling of materials will also help conserve natural resources.

For more information about the recycling of your device, please contact your local household waste disposal service or your place of purchase.

SPECIFICATIONS

MATERIALS:	Body-safe silicone & ABS
COLORS:	Pink, Magenta, Aquamarine
SIZE:	Size (L x W x H): 102 x 80.5 x 35 mm
WEIGHT:	160g
BATTERY:	Li-Ion 530mAh 3.7V
CHARGING:	60 min
USER TIME:	up to 450 uses on one full charge
STANDBY:	90 days
FREQUENCY:	94 Hz
MAX NOISE LEVEL:	<50 dB
INTERFACE:	3-button

Disclaimer: Users of this device do so at their own risk. Neither FOREO nor its retailers assume any responsibility or liability for any injuries or damages, physical or otherwise, resulting, directly or indirectly, from the use of this device. Further, FOREO reserves the right to revise this publication and to make changes from time to time in the contents thereof without obligation to notify any person of such revision or changes.

Model may be changed for improvements without notice.

©2021 FOREO AB. ALL RIGHTS RESERVED.

EU DISTR.: FOREO AB, KARLAVÄGEN 41, 114 31 STOCKHOLM, SWEDEN.

US DISTR.: FOREO INC., 1525 E PAMA LANE, LAS VEGAS, NV 89119, USA.

AUS DISTR.: 6 PROHASKY STREET, PORT MELBOURNE, VIC, 3207 AUSTRALIA.

DESIGNED AND DEVELOPED BY FOREO SWEDEN.

MANUFACTURED FOR FOREO AB.

WWW.FOREO.COM