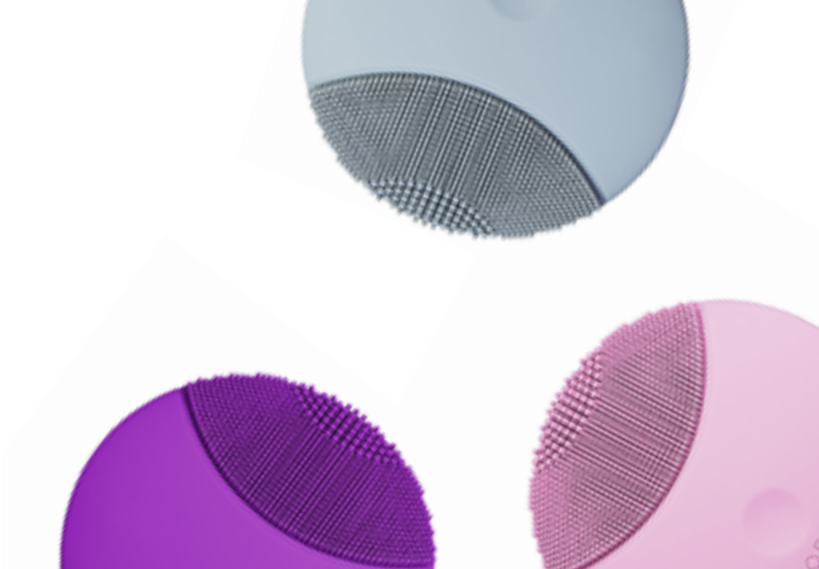
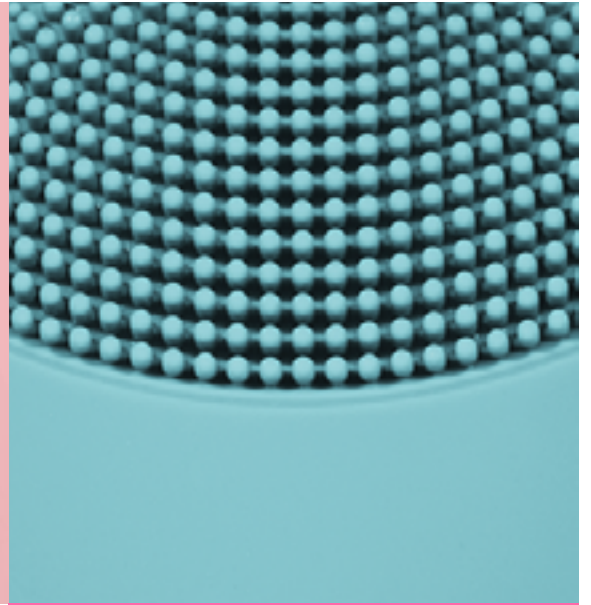


# FOREO



LUNA™ mini

COMPACT  
FACIAL CLEANSING  
& MASSAGE



# FULL USER MANUAL

---

## GETTING STARTED

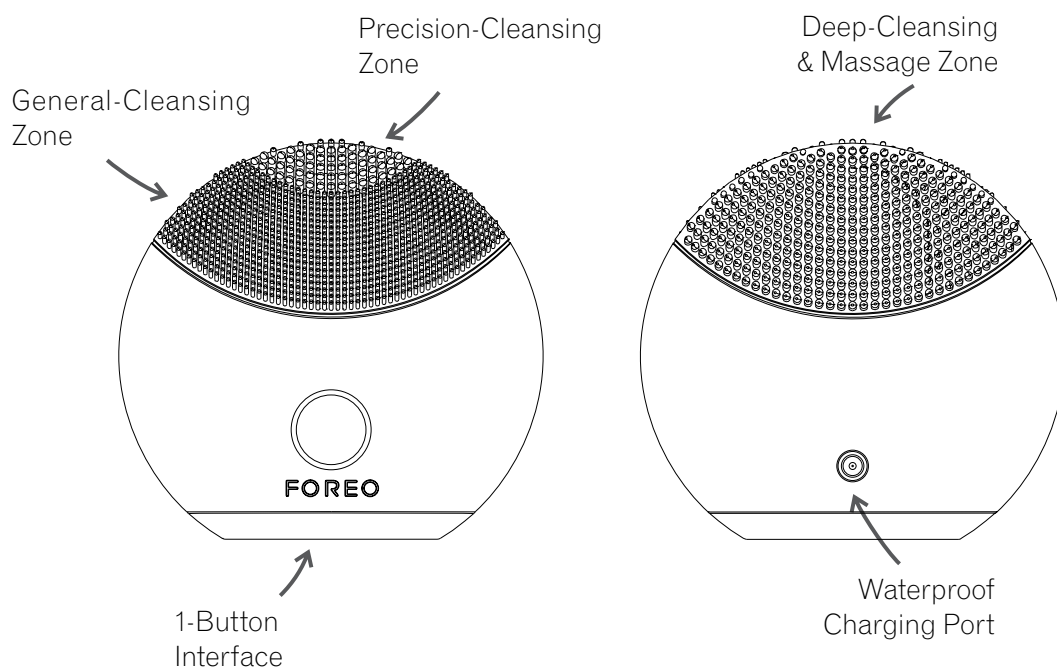
Congratulations on taking the first step towards flawlessly beautiful skin by acquiring the LUNA™ mini T-Sonic™ facial-cleansing massager. Before you begin to enjoy all the benefits of sophisticated skincare technology in the comfort of your home, please take a few moments to carefully read the instructions in this manual.

Please **READ ALL INSTRUCTIONS BEFORE USE** and utilize this product only for its intended use as described in this manual.

⚠ WARNING: NO MODIFICATION OF THIS EQUIPMENT IS ALLOWED.

## LUNA™ mini OVERVIEW

The LUNA™ mini marks a revolution in facial cleansing, combining FOREO's groundbreaking T-Sonic™ pulsations with an innovative silicone brush design for a deeper and gentler cleanse. When channeled through smooth, silicone touch-points, T-Sonic™ massaging pulsations remove blemish-causing impurities significantly more effectively than washing by hand, leaving skin clearer and brighter. Deep cleansing unblocks pores and reduces their appearance, refining and smoothing your skin's texture.



## USING YOUR LUNA™ mini

Suitable for all skin types, the LUNA™ mini's 3-zone brush features thinner touch-points to gently cleanse sensitive or dry skin and thicker touch-points for precision cleansing on the front, and broad touch-points to refresh oilier skin on the back. We recommend cleansing with the LUNA™ mini for 1 minute every morning and evening.

The LUNA™ mini's cleansing intensity is adjustable for comfort:

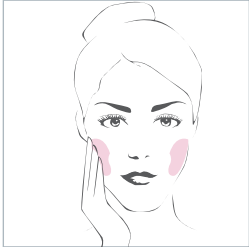
1. Press the center button once to turn on your LUNA™ mini. When activated, it will be in high-intensity Cleansing Mode.
2. Press the center button again to put the device in low-intensity Cleansing Mode.
3. Press the center button once more to deactivate your LUNA™ mini.

The individual stages of FOREO's cleansing routine are described below. After each stage of this simple, cleansing procedure, the LUNA™ mini's indicator will flash, prompting you to move on to the next area of your face.

## CLEANSING

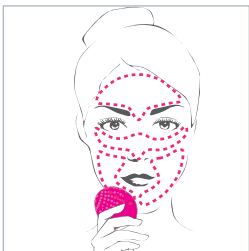
Channeled through smooth, silicone touch-points, T-Sonic™ pulsations help to unclog pores of 99.5% of dirt and oil\*, as well as remove makeup residue and dead skin cells.

Try spending around 15 seconds massaging each zone of your face; after this interval the LUNA™ mini's indicator will flash and pulsations will pause momentarily.



### 1. APPLY CLEANSER

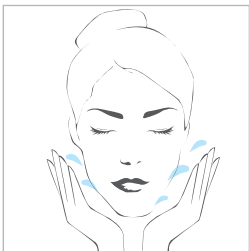
Remove all makeup, wet the LUNA™ mini then dampen your face and apply your regular cleansing product. Turn on your LUNA™ mini by pressing the center button.



### 2. CLEANSE THE FOLLOWING ZONES:

Every 15 seconds pulsations will pause to indicate when to cleanse a new zone.

- Massage your chin and cheek using circular movements and repeat on the other side.
- Starting from the center, massage your forehead with gentle outward circular strokes.
- Massage the nose by gliding up and down one side, then the other. Delicately massage the under-eye region using outward strokes – we suggest reducing the pulsation intensity.



### 3. RINSE

Rinse and dry your face to complete the 1-minute cleansing routine. Then, apply your favorite skincare products, if any.

Please note that to prevent overuse, the LUNA™ mini will automatically switch itself off if left on for 3 minutes.

**CAUTION:** If you experience any discomfort when using your FOREO device, discontinue use immediately and consult a physician.

*\*Based on clinical tests, results on file.*

## CLEANING YOUR DEVICE

Always clean your device thoroughly after use. Wash the brush surface with water and soap, then rinse with warm water. Avoid using clay-based, silicone-based or grainy cleansers, exfoliators or scrubs, as they may damage the device's soft silicone touchpoints. Pat dry with a lint-free cloth or towel. After use, we recommend spraying the device with FOREO Silicone Cleaning Spray and rinsing with warm water for optimal results.

**NOTE:** Never use cleaning products containing alcohol, petrol or acetone, as they may irritate the skin and damage the silicone.

## CHARGING

Your FOREO device is rechargeable with its included charger. One hour of charging delivers a full charge which lasts for over 5 months of use.

- Insert the DC connector into the LUNA™ mini's charging port.
- Insert the mains plug into a charging point. The LUNA™ mini's LED indicator will flash repeatedly to indicate the battery is charging. When it is fully charged (after approximately 1 hour), the LED indicator will emit a steady glow.
- When the battery is running low, the LED indicator on your LUNA™ mini will emit a blinking white light.

**CAUTION:** Before charging, make sure the charging port and charger are free from water and cleanser residue. Do not charge the LUNA™ mini in any location where it or the charger may become immersed in water. Do NOT use your FOREO device while charging and do NOT charge for more than 24 hours. Only use the FOREO-provided charger.

## IMPORTANT FOR OPTIMUM SAFETY:

- Avoid using clay-based, silicone-based or grainy cleansers, exfoliators or scrubs, as they may damage the LUNA™ mini's soft silicone touch-points.
- If you have a skin condition or any medical concerns, please consult a dermatologist before use.
- Cleansing with the LUNA™ mini should be comfortable – if you experience discomfort, discontinue use immediately and consult a physician.
- Exercise particular care when cleansing the under-eye regions and do not bring the device into contact with the eyelids or eyes themselves.
- For reasons of hygiene, we do not recommend sharing your LUNA™ mini with anyone else.
- Avoid leaving your LUNA™ mini in direct sunlight and never expose it to extreme heat or boiling water.
- Close supervision is necessary when this device is used by, on, or near children, as well as those with reduced physical and mental abilities.
- Never use the device or charger if they are damaged, and only use the charger supplied by FOREO with the device.
- Discontinue use if this product appears damaged in any way. This product contains no serviceable parts.
- To avoid the risk of electric shock, this equipment must only be connected to a supply mains with protective earth.
- Given the efficiency of the FOREO cleansing and firming massage routines, we recommend that you do not use the LUNA™ mini for more than 3 minutes at a time.
- Use this device only for its intended use as described in this manual.

## TROUBLESHOOTING

### LED does not pulse when charger is connected?

- Battery is fully charged, ready for up to 300 full cleansing routines.
- Battery is drained and will require several minutes to acknowledge charging cable.
- Charging cable is not properly connected. Check wall socket and charging port.

### The LUNA™ mini does not activate when the center button is pressed?

- Battery is empty. Recharge your LUNA™ mini.

### The LUNA™ mini cannot be switched off and/or interface buttons do not respond?

- Microprocessor is temporarily malfunctioning. Connect the charging cable to restore function to normal.

### The LUNA™ mini's silicone surfaces have degraded to a sticky or bubbly texture?

- Discontinue use. Silicone is highly durable, but degrades under certain conditions – consult this manual's Cleaning and Safety sections for how to prevent this.

If you do not find the answer to your specific question in the troubleshooting section, or if you have any other questions regarding the device's operation, please visit the Customer Care section of [www.foreo.com](http://www.foreo.com).

## WARRANTY TERMS AND CONDITIONS

### REGISTER WARRANTY

To activate your 2-Year Limited Warranty register the number provided on the FOREO Authenticity Card at [www.foreo.com](http://www.foreo.com) Warranty and Returns section under Customer Care.

### 2-YEAR LIMITED WARRANTY

FOREO warrants this device for a period of TWO (2) YEARS after the original date of purchase, against defects due to faulty workmanship or materials. If you discover a defect and notify FOREO during the warranty period, FOREO will, at its discretion, replace the device free of charge.

The warranty covers working parts that affect the device's function. It does NOT cover purely cosmetic deterioration caused by fair wear and tear or damage caused by accident, misuse or neglect. Any attempt to open or disassemble the device (or its accessories) will void the warranty.

For any warranty claim, reasonable evidence must be provided that the date of the claim is within the warranty period. For this reason, please keep your original purchase receipt for the duration of the warranty period.

To claim your warranty, you must first register and log in to your account on [www.foreo.com](http://www.foreo.com), then select the option to make a warranty claim. You will be sent a Return Merchandise Authorization (RMA) number which should be returned with the FOREO product to your nearest FOREO office. Shipping costs are non-refundable. This undertaking is in addition to your statutory rights as a consumer and does not affect those rights in any way.

## DISPOSAL INFORMATION

Disposal of old electronic equipment (applicable in the EU and other European countries with separate waste collection systems).



The crossed-out dustbin symbol indicates that this device should not be treated as household waste, but rather be brought to the appropriate collection point for recycling of electrical and electronic equipment. By ensuring this device is disposed of correctly, you will help prevent the potential negative consequences for the environment and human health which could be caused by inappropriate waste handling of the product. The recycling of materials will also help conserve natural resources.

For more information about the recycling of your device, please contact your local household waste disposal service or your place of purchase.

## SPECIFICATIONS

MATERIALS:	Body-safe silicone & ABS
COLOR:	Magenta/Petal Pink/Turquoise Blue/Purple/Cool Gray
SIZE:	75 x 80 x 28.5 mm
WEIGHT:	67 g
BATTERY:	Li-ion 200 mAh 3.7 V
CHARGING:	60 min
USAGE:	up to 300 uses
STANDBY:	90 days
FREQUENCY:	125 Hz
MAX NOISE LEVEL:	50 dB
INTERFACE:	1-button

**Disclaimer:** Users of this device do so at their own risk. Neither FOREO nor its retailers assume any responsibility or liability for any injuries or damages, physical or otherwise, resulting, directly or indirectly, from the use of this device. Further, FOREO reserves the right to revise this publication and to make changes from time to time in the contents thereof without obligation to notify any person of such revision or changes. Further, FOREO reserves the right to revise this publication and to make changes from time to time in the contents thereof without obligation to notify any person of such revision or changes.

Model may be changed for improvements without notice.

©2021 FOREO AB. ALL RIGHTS RESERVED.  
EU DISTR.: FOREO AB, KARLAVÄGEN 41, 114 31 STOCKHOLM, SWEDEN.  
US DISTR.: FOREO INC., 1525 E PAMA LANE, LAS VEGAS, NV 89119, USA.  
AUS DISTR.: 6 PROHASKY STREET, PORT MELBOURNE, VIC, 3207 AUSTRALIA.  
DESIGNED AND DEVELOPED BY FOREO SWEDEN.  
MANUFACTURED FOR FOREO AB.

[WWW.FOREO.COM](http://WWW.FOREO.COM)