

FOREO  
SWEDEN



KIWI™ derma

DIAMOND MICRODERMABRASION & PORE VACUUM DEVICE



ONLINE MANUAL

# FULL USER MANUAL

## GETTING STARTED

Congratulations on discovering smarter skincare with KIWI™ derma. Before you begin to enjoy all the benefits of sophisticated skincare technology in the comfort of your home, please take a few moments to carefully read the instructions in this manual.

Please **READ ALL INSTRUCTIONS BEFORE USE** and utilize this product only for its intended use as described in this manual.

**⚠ WARNING:** NO MODIFICATION OF THIS EQUIPMENT IS ALLOWED.

## KIWI™ derma OVERVIEW

Tormented by uneven skin texture, wrinkles and age-spots? KIWI™ derma is the triple-tech solution to solve all your aging skin concerns. Microdermabrasion gently removes the dull, damaged, uneven top layer of skin to reveal the fresh and radiant layer below. Perfectly calibrated suction 'vacuums' over-congested pores, leaving them perfectly purged and minimized. T-Sonic™ massage improves microcirculation and lymphatic drainage to help fade pigmentation and reduce puffiness. For a complexion that looks younger, healthier and more refined.

## GETTING TO KNOW YOUR KIWI™ derma FEATURES

### MICRODERMABRASION TIPS

Medical-grade steel embedded with Adamas diamonds exfoliates skin, improves wrinkles, and evens texture and tone. Designed so they never need to be replaced.

### INTENSITY INDICATOR LIGHTS

Light up to indicate the vacuum suction intensity setting of your device.

### ULTRA-HYGIENIC SILICONE

Bacteria-resistant and velvety soft.

### VACUUM SUCTION

Perfectly calibrated gentle yet effective suction extracts impurities from deep within pores, without damaging skin.

### T-SONIC™ MASSAGE

Enhances circulation, lymphatic drainage and product absorption, and temporarily dilates pores for more effective suction.

### CHARGING PORT

Up to 120 mins of use per charge.

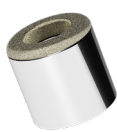
### UNIVERSAL BUTTON

Turns device on and off, adjusts intensity level, and puts device in Bluetooth pairing mode.



### SMALL TIP

Precisely exfoliates the T-zone area.



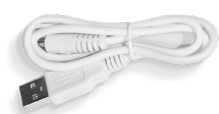
### MEDIUM TIP

Helps reduce visible fine lines & stubborn imperfections.



### LARGE TIP

Gently exfoliates the cheeks & sensitive areas.



### USB CHARGING CABLE

Charge anytime, anywhere.



## HOW TO USE YOUR KIWI™ derma

### REGISTER YOUR WARRANTY

Before first use, download the FOREO For You app to register your device and activate the warranty by following these simple steps:

1. Download the FOREO app on your mobile phone by scanning the QR code.
2. Log in to your existing account, or sign up for a new one.
3. Add device (on the top of your screen).
4. Choose device series.
5. Follow the instructions on the app and fill in the purchase information.

And your device is ready to use!

[www.foreo.com/app](http://www.foreo.com/app)



### HOW TO USE



#### 1. CLEANSE SKIN

Thoroughly cleanse and dry your face and neck. We recommend using a FOREO LUNA™ Facial Cleansing Massager with Micro-Foam Cleanser. (TIP: For optimal results, you can apply a hot towel to your face for 5 minutes to open up the pores, if desired).



#### 2. SELECT PREFERENCES

Attach your preferred tip to the device. Then press the universal button to turn on KIWI™ derma. Adjust the vacuum suction intensity by pressing the button again, once for each level. Access more settings via the FOREO app.



#### 3. REFINE & REJUVENATE

Gently hold skin taut. Then press the tip of the device flat against your skin, and quickly glide across your face in upward motions. Once finished, gently wash your face with water and pat dry. Complete your treatment by thoroughly moisturizing skin. We recommend using FOREO UFO™ Deep Hydration Facial Device with your preferred UFO™ Activated Mask

### THINGS TO NOTE:

- Always glide the device quickly and evenly across skin, in an upward motion.
- Do not pause in one area as bruising may occur. Do not use over extra-sensitive skin, active breakouts or open wounds.
- Before using KIWI™ derma on your face, you can test it on your arm to find your optimal comfort level. Start on intensity level 1, and see how your skin reacts. Then work your way up to the intensity level that feels effective yet comfortable.
- Apply a hot towel to your face for 5 minutes to temporarily dilate the pores and soften the skin, before using the device.
- Do not over-exfoliate - one glide per area is enough. And do not apply excessive pressure - KIWI™ derma's diamond microdermabrasion will work even with minimal pressure.
- After your treatment, moisturize skin thoroughly to hydrate skin and reduce the reddening of sensitive areas. We recommend using FOREO's UFO™ Deep Hydration Facial Device with your preferred UFO™ Activated Mask.
- We recommend using KIWI™ derma 1-2 times per week for optimal results, in the PM to allow your skin to heal overnight.
- Avoid using retinoids, peels, or other exfoliating treatments for at least 3 days before and after performing microdermabrasion at home. Additionally, refrain from using Vitamin C products at least one week before and after the procedure, to avoid over-irritation.
- It's important to limit sun exposure before and after microdermabrasion treatment. Avoid the sun and use sunscreen at least a week before and after the procedure to prevent potential harm to the skin. We recommend using a broad-spectrum sunscreen with a high SPF.
- KIWI™ is not 100% waterproof, so do not clean the device under running water. Find detailed cleaning instructions in the Online Manual, under 'How To Use' on the app.
- Read the entire Online Manual thoroughly before use for a safe and effective treatment.



## CLEANING YOUR KIWI™ derma

Since KIWI™ derma is the world's first microdermabrasion device that doesn't require any replacement parts, it's important that you follow our device cleaning instructions carefully, to keep your treatments as effective as possible.



For optimal results, unscrew the tip, hold it under running water to wash away any dirt and debris, and leave it to completely air dry before replacing it on the device



Meanwhile, spray the body of the device with FOREO Silicone Cleaning Spray, and wipe away any residue using a damp, lint-free cloth or towel.



Finally, spray FOREO Silicone Cleaning Spray onto a cotton swab, and use it to gently wipe away any dirt and debris that has collected on the silicone filter.

**NOTE:** KIWI™ derma is NOT 100% waterproof, so do not clean the device under running water. Never use cleaning products containing alcohol, petrol or acetone, as they may irritate the skin and damage the silicone.

## IMPORTANT FOR OPTIMUM SAFETY:

- This appliance can be used by people aged 12 years and above, and persons with reduced physical, sensory or mental capabilities or lack of experience and knowledge, if they have been given supervision or instruction concerning use of the appliance in a safe way and understand the hazards involved. Children should not play with the appliance.
- If you have a skin condition or any medical concerns, please consult a dermatologist before use.
- Using KIWI™ derma should be comfortable – if you experience discomfort, discontinue use immediately and consult a physician.
- Exercise particular care when using KIWI™ derma around the under-eye regions and do not bring the device into contact with the eyelids or eyes themselves.
- At no time should you stop moving the device on skin with the power on.
- For reasons of hygiene, we do not recommend sharing your KIWI™ derma with anyone else.
- Avoid leaving your KIWI™ derma in direct sunlight, and never expose it to extreme heat or boiling water.
- Given the efficiency of the KIWI™ derma microdermabrasion treatments, we recommend that you do not glide the device more than once per area, during your treatment.
- KIWI™ derma uses vacuum suction. Those with sensitive or rosacea-prone skin must use caution and care when using this device.
- Cleaning and user maintenance should not be made by children without supervision.
- Do not use while driving or operating heavy machinery.
- Do not use the device when it is plugged in.
- Do not insert any object into any opening of the device.
- Do not use the device if it is overheating or you suspect that it is malfunctioning.
- KIWI™ derma should be completely dry before activating. Do not use the device if it has been submerged in water, and do not use with wet hands.
- This device should only be used with a SELV power adapter.
- It is recommended that IEC60950 standard power suppliers are used to charge the device.
- Before charging, make sure that the plug and socket are completely dry. Failure to do so may result in electric shock, short circuit, or fire.
- Do not use the device while charging. Discontinue use if this device or charger is not working properly or appears damaged in any way. Use the power cord supplied with your device only.
- This appliance contains batteries that are non replaceable.

- The battery must be removed from the appliance before it is disposed of. The appliance must be disconnected from the supply mains when removing the battery, and the battery is to be disposed of safely.
- This product contains no serviceable parts.
- This device is intended for cosmetic use on the face and neck. Any harmful consequences resulting from misuse, application to other body areas, connection to improper voltage sources, dirty conductive solution or spheres, or any other improper applications are not the responsibility of FOREO.
- Use this device only for its intended use as described in this manual. If you do not find the answer to your specific question, or if you have any other questions regarding the device's operation, please visit [foreo.com/support](https://foreo.com/support)

## TROUBLESHOOTING

*Precautions to be taken in the event of changes in the performance of KIWI™ derma.*

**If KIWI™ derma is not activated when pressing the universal button:**

- Battery is empty. Charge your KIWI™ derma via USB charger for up to 1.5 hours, or until the indicator lights turn green. A full charge will last up to 120 mins.

**If KIWI™ derma cannot be switched off and/or universal button does not respond:**

- Microprocessor is temporarily malfunctioning. Press and hold the universal button to restart the device.

**If KIWI™ derma won't sync to the FOREO app:**

- Ensure that your device is fully charged and that your Bluetooth is turned on.
- Switch your Bluetooth off and then on again to try reconnecting.
- Close the FOREO app and then reopen it to restart the process.
- Delete and reinstall the application - perhaps the application simply needs to be updated.

**If the indicator lights on KIWI™ derma change color:**

- Red lights indicate low battery. Charge your device.
- Orange lights indicate the device is charging. Continue to charge until the lights turn green.
- Green lights indicate the device is fully charged. Remove the USB charging cable.

## WARRANTY TERMS & CONDITIONS

### REGISTER WARRANTY

To activate your 2-Year Limited Warranty, register through the FOREO For You app, or visit [foreo.com/product-registration](https://foreo.com/product-registration) for more information.

### 2-YEAR LIMITED WARRANTY

FOREO warrants this device for a period of TWO (2) YEARS after the original date of purchase against defects due to faulty workmanship or materials arising from Normal Use of the device. The warranty covers working parts that affect the function of the device. It does NOT cover cosmetic deterioration caused by fair wear and tear, or damage caused by accident, misuse or neglect. Any attempt to open or take apart the device (or its accessories) will void the warranty.

If you discover a defect and notify FOREO during the warranty period, FOREO will, at its discretion, replace the device free of charge. Claims under warranty must be supported by reasonable evidence that the date of the claim is within the warranty period. To validate your warranty, please keep your original purchase receipt together with these warranty conditions for the duration of the warranty period.

To claim your warranty, you must log in to your account at [www.foreo.com](https://www.foreo.com) and then select the option to make a warranty claim. Shipping costs are nonrefundable. This undertaking is in addition to your statutory rights as a consumer and does not affect those rights in any way.

## DISPOSAL INFORMATION

Disposal of old electronic equipment (applicable in the EU and other European countries with separate waste collection systems).



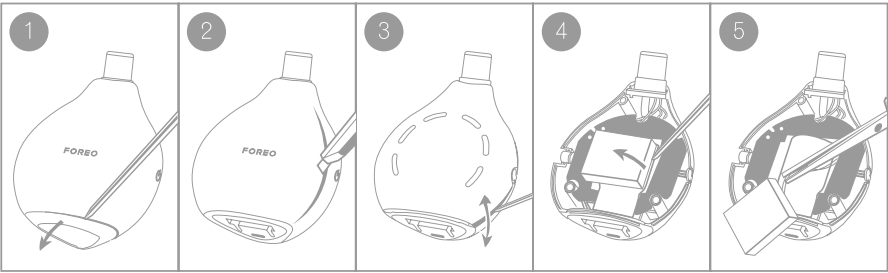
The crossed-out dustbin symbol indicates that this device should not be treated as household waste, but rather be brought to the appropriate collection point for recycling of electrical and electronic equipment. By ensuring this device is disposed of correctly, you will help prevent the potential negative consequences for the environment and human health which could be caused by inappropriate waste handling of the product. The recycling of materials will also help conserve natural resources.

For more information about the recycling of your device, please contact your local household waste disposal service or your place of purchase.

## BATTERY REMOVAL

**NOTE:** This process is not reversible. Opening the device will void its warranty. This action must only be undertaken when the device is ready to be disposed of.

Because this device contains a lithium-ion battery, the battery must be removed before disposal and should not be thrown away with household waste. To remove the battery, open the inner plastic shell after removing the silicone outer layer and remove the battery to be disposed of in accordance with your local environmental regulations. Wear gloves during this process for your safety.



## SPECIFICATIONS

|                   |   |                         |                                     |
|-------------------|---|-------------------------|-------------------------------------|
| <b>MATERIALS:</b> | Body-Safe Silicone, ABS, PC, Chrome Plated Zinc Alloy, Stainless Steel, Adamas Diamonds | <b>USAGE:</b>           | Up to 120 minutes of use per charge |
| <b>COLOR:</b>     | Lavender  | <b>STANDBY:</b>         | 90 days                             |
| <b>SIZE:</b>      | H106 x W80.5 x D48 mm   | <b>FREQUENCY:</b>       | 183 Hz                              |
| <b>WEIGHT:</b>    | 157g  | <b>MAX NOISE LEVEL:</b> | <50 dB                              |
| <b>BATTERY:</b>   | Li-ion 520mAh 3.7V  | <b>INTERFACE:</b>       | 1-button                            |

**Disclaimer:** Users of this device do so at their own risk. Neither FOREO nor its retailers assume any responsibility or liability for any injuries or damages, physical or otherwise, resulting directly or indirectly from the use of this device. Furthermore, FOREO reserves the right to revise this publication and to make changes from time to time in the contents thereof without obligation to notify any person of such revision or changes.

**CAUTION:** Changes or modifications to this unit not expressly approved by the party responsible for compliance could void the user's authority to operate the equipment.

**NOTE:** This device complies with Part 15 of the FCC Rules. Operation is subject to the following two conditions:

- (1) This device may not cause harmful interference, and
- (2) This device must accept any interference received, including interference that may cause undesired operation.

This device contains licence-exempt transmitter(s)/receiver(s) that comply with Innovation, Science and Economic Development Canada's licence-exempt RSS(s). Operation is subject to the following two conditions:

- (1) This device may not cause interference.
- (2) This device must accept any interference, including interference that may cause undesired operation of the device.

FOREO declares that this device is in compliance with Directive 2014/53/EU. The full text of the EU declaration of conformity for the product is available at <https://www.foreo.com/support/ec-conformity>

Model may be changed for improvements without notice.

©2023 MANUFACTURED FOR: FOREO AB.  
DESIGNED AND DEVELOPED BY: FOREO SWEDEN. ALL RIGHTS RESERVED.  
IMPORTER AND DISTRIBUTOR:  
EU: FOREO AB, KARLÄVAGEN 41, 114 31 STOCKHOLM, SWEDEN  
US: FOREO INC., 1525 E. PAMA LANE, LAS VEGAS, NV 89119, USA.  
AUS.: 6 PROHASKY STREET, PORT MELBOURNE, VIC, 3207 AUSTRALIA.

**WWW.FOREO.COM**